

Sunday School Grade 3 A.G.A.P.E. Curriculum

[Appreciating God-Given Abilities of Persons with Exceptionalities]



Coptic Orthodox Diocese of the Southern United States

Under the Auspices of His Grace Bishop Youssef

Πατρισταρκοπος ηρεμνηνη νορθοδοξος ητε νιθωψ ετζωτπ ετσαρης

Sunday School Grade 3

A.G.A.P.E. Curriculum

- The AGAPE curriculum is for exceptional student education [ESE] for Sunday School. It is designed by the Coptic Orthodox Diocese of the Southern United States.
- This is a modified curriculum designed for individuals with special needs.
- This curriculum is intended to be taught alongside with the general Sunday School program for each grade.

Sunday School Grade 3

A.G.A.P.E. Curriculum

- Inclusion is an important aspect of the social and learning paradigm of individuals with special needs.
- Stewards serving children and youth with special needs should try to integrate the students in the mainstream classes for as much time as can be tolerated by the student with special needs.
- Integration and inclusion foster friendships among the same age peer group.

Preparation for Adam Is Sent Out Of The Garden of Eden (An Angel Guards The Garden)

Lessons for the month of December

- **Lesson Outline: Week 4**

- God put Adam and Eve in the Garden of Eden.
- God told them not to eat from the tree in the middle of the garden.
- Eve ate from the tree and gave Adam to eat.
- God found out. He made them cloths out of animal skin.
- God threw them out of the Garden of Eden.
- God put Cherubim with a sword at the east of the Garden of Eden.

Word Bank

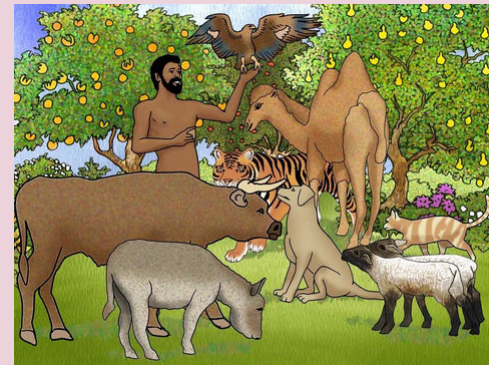
- Adam



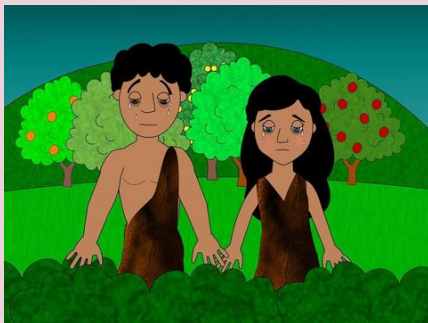
- Eve



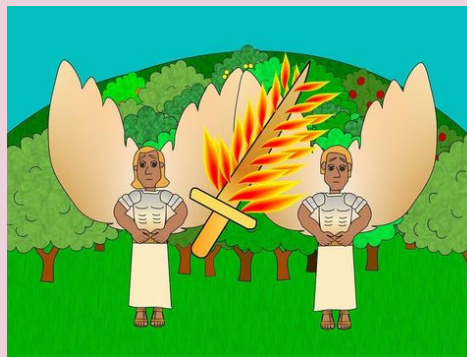
- Garden of Eden



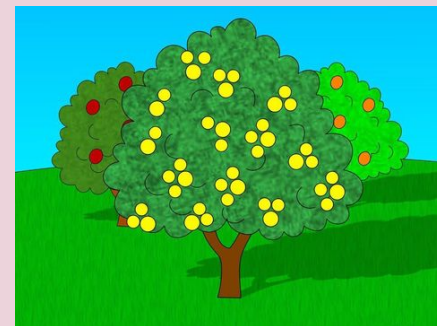
- Cloth



- Cherubim



- Tree



Objective: The Lord hates sin but He loves man.

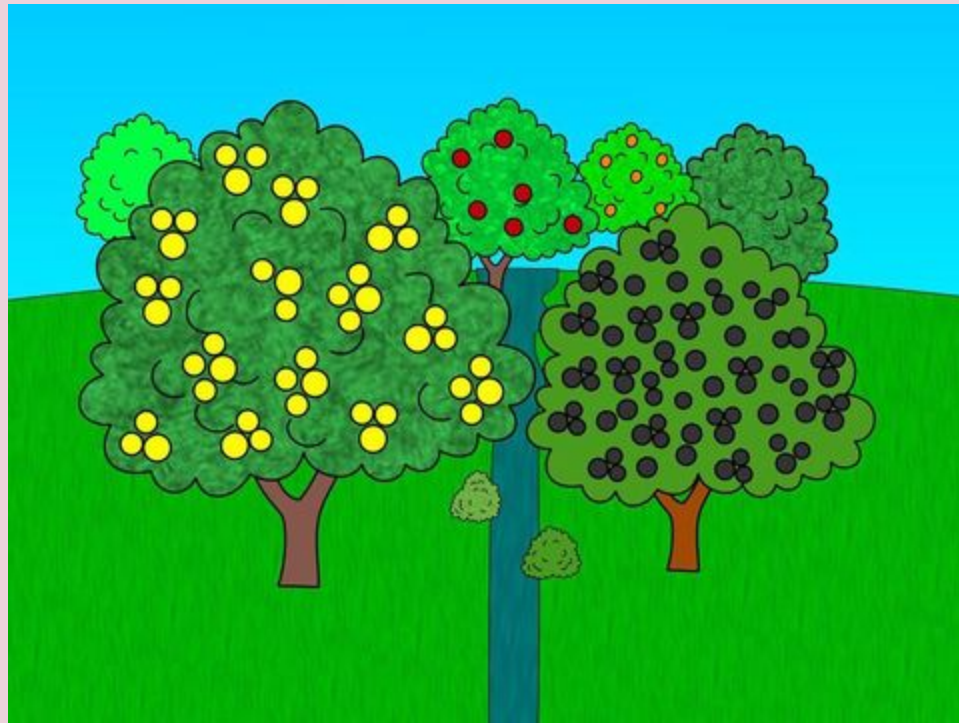


©2016 Coptic Orthodox Diocese of the Southern United States, 501(c)3 organization

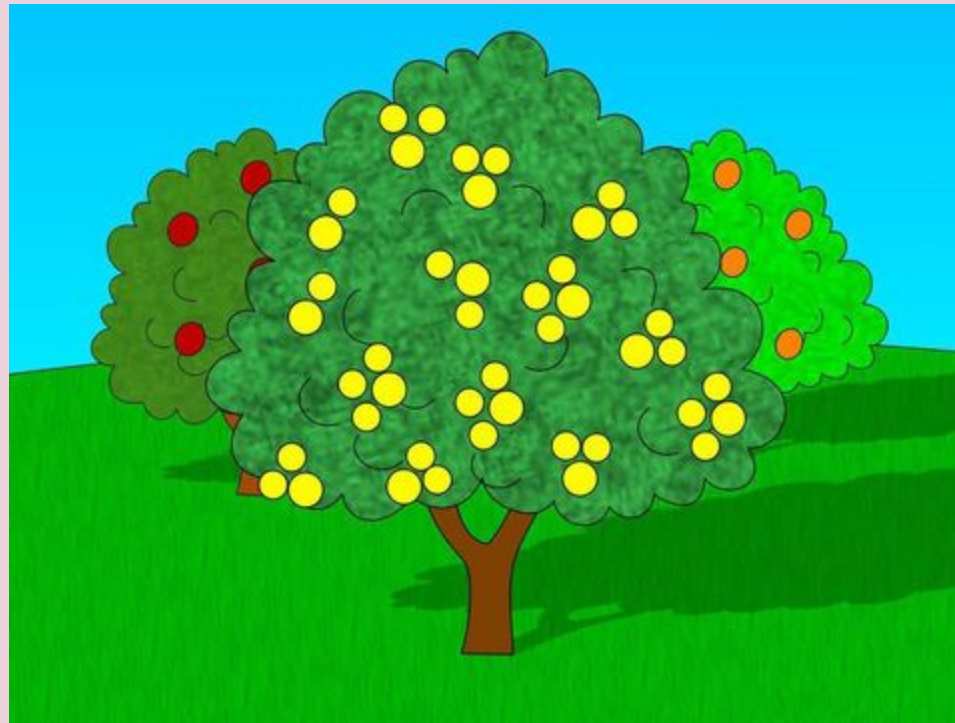
Memory Verse: “For Adam and his wife the Lord God made tunics of skin” (Genesis 3:21).



God put Adam and Eve in the Garden of Eden.



God told them not to eat from the tree in the middle of the garden.



Eve ate from the tree and gave Adam to eat.



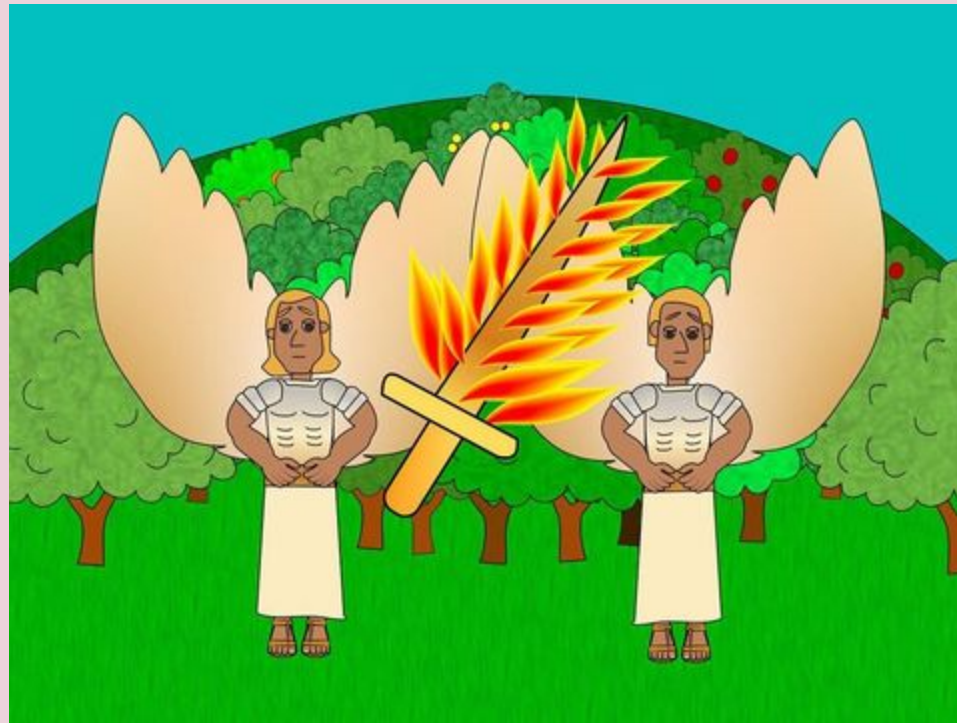
God found out. He made them cloths out of animal skin.



God threw them out of the Garden of Eden.



God put Cherubim with a sword at the east of the Garden of Eden.



Adam Is Sent Out Of The Garden of Eden (An Angel Guards The Garden)

Lessons for the month of December

- **Conclusion**

- God put Adam and Eve in the Garden of Eden.
- God told them not to eat from the tree in the middle of the garden.
- Eve ate from the tree and gave Adam to eat.
- God found out. He made them cloths out of animal skin.
- God threw them out of the Garden of Eden.
- God put Cherubim with a sword at the east of the Garden of Eden.

- To God be the glory, forever, Amen.

Resources

- Application
 - Coordinate a time for A.G.A.P.E. students to interact with non- A.G.A.P.E. students.
- Activities—Customize according to student abilities, speech, and fine and gross motor skills.
 - Coloring/Painting
 - Cut and Paste
 - Music/Games
- References
 - <http://www.suscopts.org/ssc/Grade03.pdf>